

# Space:Maker Softline™

## Sliding Wardrobe Door System



Australian  
Design Award



*This quality product has been selected to hold the certification mark of the Australian Design Award.*

*Independent specialists have carefully assessed it against 42 design factors covering:*

- Performance • Maintenance
- Value • Ease of use • Durability
- Appearance • Safety • Construction

The Australian Design Award recognises well-designed products of International Standard.

STANDARDS AUSTRALIA ✓

**Proudly Australian made and exported**



## Smooth Roller Gliding

Large 41mm diameter round-tyred rollers, combined with a strong metal adjustment bracket, ensure quiet operation and more roller adjustment than is ever likely to be needed. Open design and construction enables easy cleaning. (Inside of door shown above).

## Panel Variety

**Space:Maker Softline™** is available in clear or tinted anti-shatter safety-backed mirror panels, plus a wide range of woodgrain or vinyl finishes. Plain panels for painting or wallpapering are an alternative for the do-it-yourself enthusiast.

## Space: Maker Softline™ – Features

- round, modern appearance
- large 41mm diameter rollers and brackets for quiet operation and ease of adjustment
- design-registered anti-jump device prevents door panels from jumping off the track
- matching infill buffers on grip stile
- continuous finger grip on all panels
- foot-friendly, easy-to-clean track
- 10-year guarantee
- recipient of the coveted Australian Design Award.

## Product Guarantee

**Space:Maker Triline™** components and frames carry a 10-year guarantee when used under normal operating conditions.



## Perfectly Secure Panels

An anti-jump feature, which is incorporated in the design-registered head channel spacers, ensures the panels cannot jump the track and provides quiet rattle-free operation.

## Design Flexibility

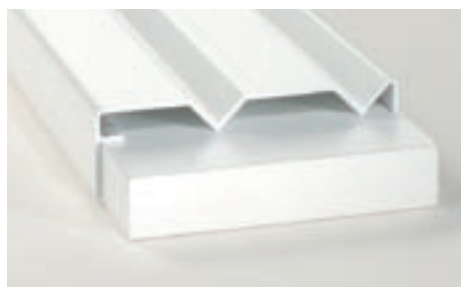
Made to suit your individual requirements. **Space:Maker Softline™** wardrobes are suitable for either wall to wall or corner return installations. Constructed from high quality aluminium extrusions **Space:Maker Softline™** is designed to suit most situations and ceiling heights up to three metres. The continuous finger grip on all door panels provides additional strength and ease of use

## Exceptional Value

Indulge your imagination and create an absolutely premium wardrobe design at a surprisingly affordable price.

## Low Profile Bottom Track

**Space:Maker Softline™** with foot-friendly, unobtrusive, low-profile design and easy-to-clean track, Roller side-play is virtually eliminated, producing a smoother sliding operation.



## Modern Contoured Cushioning

Matching infill buffer with grip stile eliminates metal to metal contact and gives **Space:Maker Softline™** a smooth modern contoured appearance.

## Safety

**Space:Maker Softline™** Sliding Wardrobe Door System is glazed to comply with the requirements of Australian Standards AS 1288 and/or AS 2208.

## Colour Selection

	Black
	Rose Ash
	Wild Grey
	White Birch
	APO Grey
	Tropics
	Almond Cream
	Almond Ivory
	White
	Bright Satin
	Bright Bronze
	Bright Gold
	Bright Natural
	Matt Bronze
	Matt Gold
	Matt Natural

Special colours available on request.

## Obligation-free measure & quote

Please call for an obligation-free measure and quote, and also ask for details on matching: MIROX FINELINE™ Mirror Framing Systems, the Australian Award-winning Space:Maker Softline™, MIRRORLINE™, STRONGLINE™ and PANELDOOR™ Sliding Wardrobe Systems. The Australian Design Award-winning SERIES 9300™ Sliding Shower Screen range, the Australian Design Mark INTEGRITY 9400™ Pivoting Shower Door System range. FREESTYLE™ Bath Screen Systems. PROFILE™ 2040, CONTOUR™ 2050, MIRAGE3050™, EDEN3040™ Perimeter Framed Shower Screen Systems.

## Available from: